

Exeter Chess Club: Exchanging into King endings

Dr. Dave

April 19, 2004

Contents

1	Exchanging into a lost King ending	1
1.1	Jones - Bellers, 1975	1
1.2	Theory:Opposition, Triangulation, 1995	1
1.3	Hibbitt - Bellers , 1995	2
1.4	Bellers - Pritchard 1995	2
1.5	Bellers - Hodgson , 1977	2
2	Exchanging to won King ending,	3
2.1	Sarahs - Bellers, 1995	3
2.2	Bellers - Evans, 1977	3
2.3	Thornley - Bellers, 1995	3
2.4	Furnewell - Frost , 1995	4
2.5	Bellers - Saqui, 1983	4

off his active rook, failing to see just 2 or 3 moves ahead.

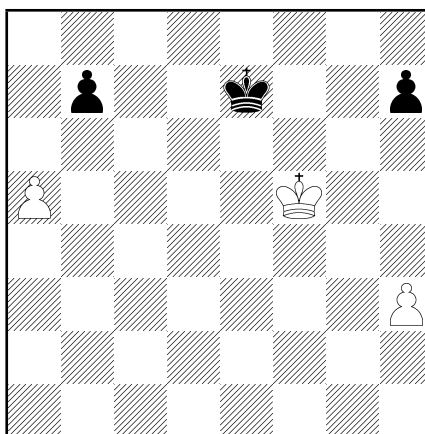
1 It is amazing how often this occurs.

1. ♖a4+

[1. ♖f6 or indeed almost anything else would have been better!]

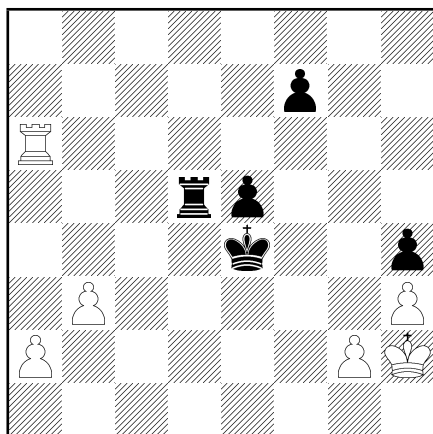
1. . . . , ♖d4 2. ♖×d4+ e×d4 3. ♔g1 ♕d3 4. ♕f2 ♕c2 0-1

1.2 Theory:Opposition, Triangulation, 1995



1 Exchanging into a lost King ending

1.1 Jones - Bellers, 1975



What makes players do the following? White swaps

1. ♕g5!

[1. ♕e5 ? 1. . . . , ♕d7 2. ♕f6

[2. ♕d5 h5 the bK is too near the a-pawn for White to win]

2. . . . , ♕c6 Black can queen the pawn in seven moves]

[1. h4 ♕f7 with the opposition 2. h5 h6]

1. . . . , ♕f7 2. ♕h6 ♕g8 3. h4 ♕h8 4. ♕h5

[4. ♕g5 ♕g7 draws with the opposition]

[4. h5 ♕g8 5. ♕g5 ♕f7

[5. . . . , ♕g7 even this draws: 6. h6+ ♕f7 7. ♕f5 ♕e7 8. ♕e5 ♕d7 9. ♕f6 ♕d6 10. ♕g7 ♕e7 11. ♕×h7 ♕f7]

6. ♖f5 h6]

4. ..., ♖g8 5. ♖g4

taking the distant opposition

5. ..., ♖f8 6. ♖f4 ♖e8 7. ♖g5 !

[7. ♖e4 ♖d7 8. ♖f5

[8. ♖d5 h5]

8. ..., ♖c6 9. ♖g5 ♖b5]

7. ..., ♖f7 8. ♖f5

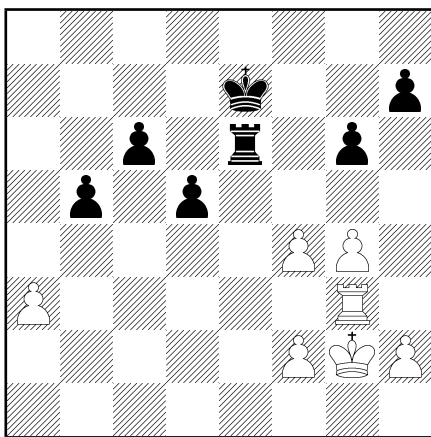
again with the opposition but also with the pawn held back on h4

8. ..., ♖e7 9. ♖e5 ♖d7 10. ♖f6 ♖c6 11. h5 ♖b5 12. ♖g7 ♖xa5 13. h6 b5 14. ♖xh7 b4 15. ♖g7 ! 15. ..., b3 16. h7 b2 17. h8=♖ b1=♖

[17. ..., ♖b4 King and Knight or centre pawn loses (Rook or Bishop pawns on the seventh draw) 18. ♖b8+ ♖c3 19. ♖f6 ♖c2 20. ♖c7+ ♖d1 21. ♖b6 ♖c2 22. ♖c5+ ♖d3 23. ♖b4 ♖c2 24. ♖c4+ ♖d2 25. ♖b3 ♖c1 26. ♖c3+ ♖b1 27. ♖e5 ♖a2 28. ♖c2 ♖a1 29. ♖a4+ ♖b1 30. ♖d4 ♖c1 31. ♖c4+ ♖b1 32. ♖c3 ♖a1 33. ♖a4+ ♖b1 34. ♖c2+ ♖a2 35. ♖xb2#]

18. ♖a8+ ♖b4 19. ♖b7+ ♖c3 20. ♖xb1 1-0

1.3 Hibbitt - Bellers , 1995



How do you assess this position? Black has a menacing array of Queen's-side pawns and threatens simply ...Kd6, ...c5 etc. White's only chance is to create diversions on the King's-side and hope that it compensates.

1. ♖e3 ? 1. ..., d4 2. ♖xe6+ ♖xe6 3. ♖f3 ♖d5 4. ♖e2 ?

[4. f5 gxf5 5. g5 ♖e5 6. h4 f4 !

[6. ..., c5 7. h5 c4 8. h6 wins for White]

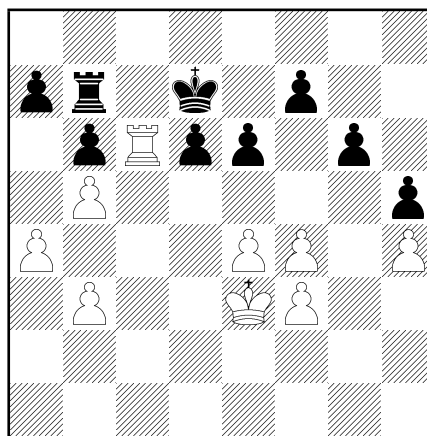
7. ♖g4 d3 8. ♖f3 ♖f5 -+]

4. ..., ♖e4

resigns.

Note how potent ...f4 can be at the right time. 0-1

1.4 Bellers - Pritchard 1995

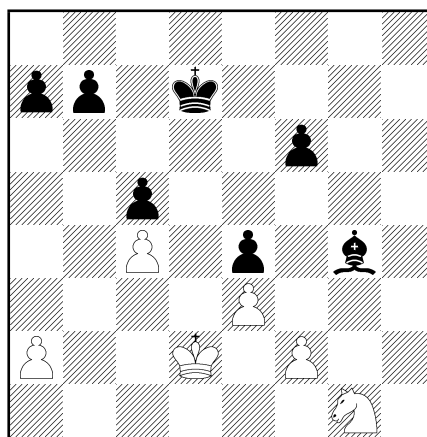


White has been pressing throughout, but Black now threatens to equalise with ...Rc7.

32. f5 ! (that break again) 32. ..., exf5 33. exf5 ♖c7 34. fxg6 fxg6 35. ♖xc7+ ♖xc7 36. ♖d4 ♖d8 37. ♖e4 ♖e7 38. ♖d5 ♖d7 39. b4 ♖e7 40. a5 ♖d7 41. a6 ♖e7 42. ♖c6 d5 and resigns:

43. ♖b7 d4 44. ♖xa7 d3 45. ♖xb6 d2 46. a7 d1=♖ 47. a8=♖ 1-0

1.5 Bellers - Hodgson , 1977

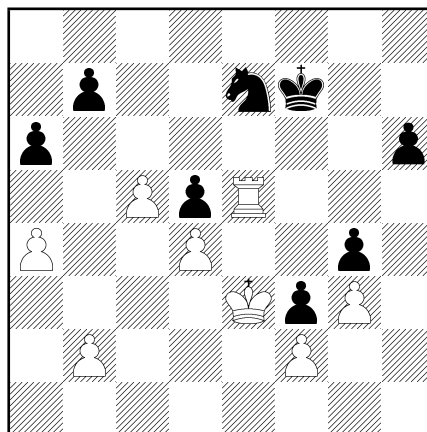


Against a youthful Julian Hodgson, White is paying the price of playing Grob's Attack!

25. $\text{N}e2$ $\text{B}xe2$ 26. $\text{K}xe2$ $\text{K}c6$ 27. $f3$ $exf3+$
28. $\text{K}xf3$ $b5$ 29. $cxb5+$ $\text{K}xb5$ 30. $\text{K}e4$ $\text{K}c4$
resigns.

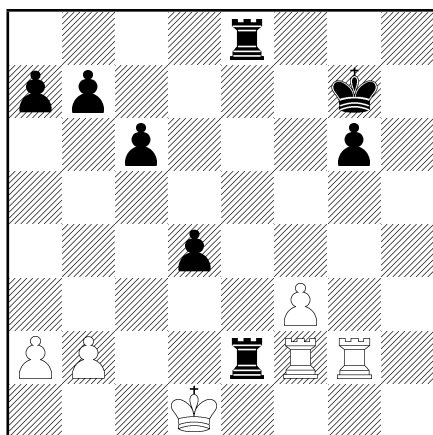
But is the position before 25. $\text{N}e2$ totally lost? The Knight is tied down, but the Bishop has to stay on g4 to keep it there, and meanwhile the Knight is guarding all the entry squares

2.2 Bellers - Evans, 1977



2 Exchanging to won King ending,

2.1 Sarahs - Bellers, 1995



Black is two pawns up with a passed d-pawn and control of the e-file. What is the best way forward? Double Rook endings can be difficult to win.

30. ..., d3

completing the stranglehold

31. $b4$ $b6$ 32. $a4$ $\text{R}xf2$ 33. $\text{R}xf2$ $\text{R}e2$ 34.
 $\text{R}xe2$ $dxe2+$ 35. $\text{K}xe2$ $\text{K}f6$ 36. $\text{K}e3$ $\text{K}e5$
37. $a5$ $bxa5$ 38. $bxa5$ $c5$ 0-1

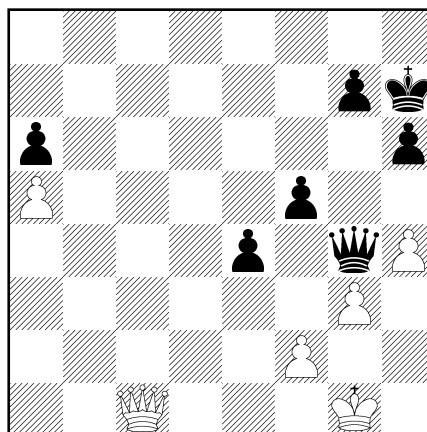
White swaps off into a won K+P ending, but it isn't as easy as White first thought. Simply 47. $b2-b4$ would have been stronger.

47. $\text{R}xe7+$ $\text{K}xe7$ 48. $\text{K}f4$ $h5$ 49. $b4$ $\text{K}f6$
50. $b5$ $axb5$ 51. $axb5$ $\text{K}e6$ 52. $c6$?

[52. $\text{K}g5$ wins easily]

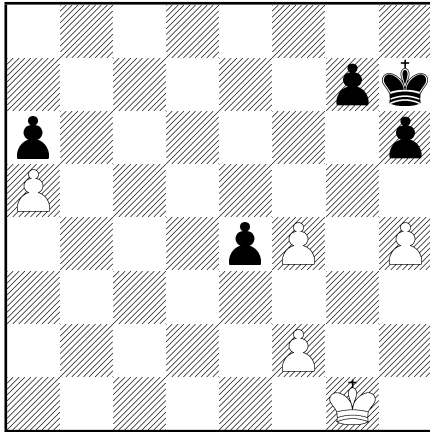
52. ..., $bxc6$ 53. $bxc6$ $\text{K}d6$ 54. $\text{K}g5$ $\text{K}xc6$
55. $\text{K}xh5$ $\text{K}b5$ 56. $\text{K}xg4$ $\text{K}c4$ 57. $\text{K}xf3$
 $\text{K}xd4$ 58. $\text{K}e2$ $\text{K}c3$ 59. $\text{K}d1$ $\text{K}d3$ 60. $g4$
 $\text{K}e4$ 61. $g5$ $\text{K}f5$ 62. $f4$ 1-0

2.3 Thornley - Bellers, 1995



White is a pawn down but seems to have everything covered. Black must do something active to break through.

55. ..., $f4$ (that move again) 56. $\text{K}xf4$ $\text{K}xf4$
57. $gxf4$



how do you assess this position?

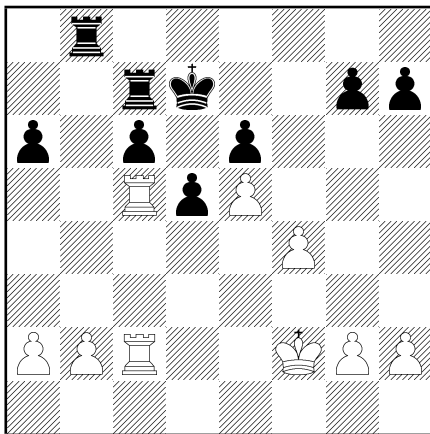
57. ..., ♖g6 58. ♖g2 ♖f5 59. h5

[59. ♖g3 h5]

59. ..., ♖×f4 60. ♖f1 ♖f3 61. ♖e1 e3 62. f×e3 ♖×e3 63. ♖d1 ♖f4 64. ♖d2 ♖g5 65. ♖c3 ♖×h5 66. ♖c4 g5 67. ♖c5 g4 68. ♖b6 g3 69. ♖×a6 g2 70. ♖b7 g1=♔ 71. a6 ♖g5

resigns: advanced Rook pawns do draw against K+Q but not K+Q+P! 1-0

2.4 Furnewell - Frost , 1995

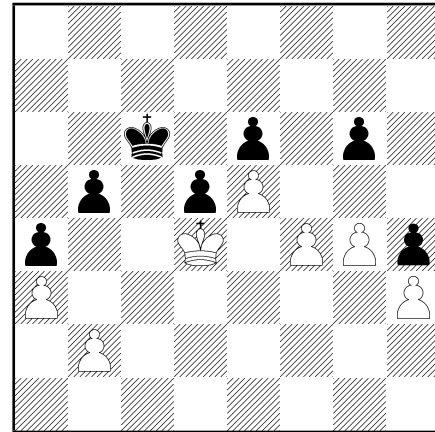


I'm not sure how to categorise this one: Black thought he was transposing into a won K+P ending because of the protected passed d-pawn, White presumably thought it was won. Who was right?

26. ..., ♖b5

White has the choice: leaving the rooks on may have been easier

27. ♖×b5 c×b5 28. ♖×c7+ ♖×c7 29. ♖e3 ♖c6 30. ♖d4 a5 31. a3 a4 32. h3 g6 33. g3 h5 34. g4 h4



35. f5

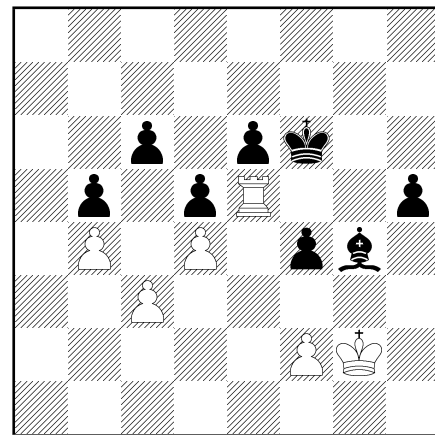
But

[35. ♖e3 ♖c5 36. f5 draws easily! 36. ..., e×f5 37. g×f5 g×f5 38. ♖f4 d4 39. e6 ♖d6 40. ♖×f5 d3 41. ♖f6 d2 42. e7 ♖d7 43. ♖f7 d1=♔ 44. e8=♔+]

35. ..., e×f5 36. g×f5 g×f5 37. ♖e3 ♖d7 38. ♖f3 ♖e6 39. ♖f4 d4

0-1

2.5 Bellers - Saqui, 1983



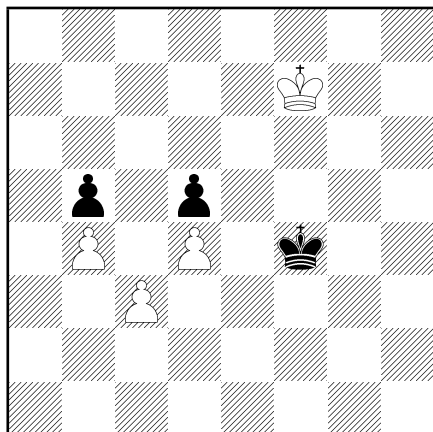
Finally, an ending to demonstrate the resources that may exist when all seems lost. The key to this ending is the greater mobility of the rook, and the ability of the wK to gain entry on the White squares.

44. ♖e1 ♖e7 45. ♖h1 f3+ 46. ♖g3 ♖f7 47. ♖f4 ♖f6 48. ♖a1 ♖e7 49. ♖e5 ♖f7 50. ♖d6

two pawns now go, but it's still got to be won

50. ..., ♖f5 51. ♖×c6 ♖d3 52. ♖d6 ♖f6 53. ♖h1 ♖g5 54. ♖×e6 ♖c4 55. ♖e5 ♖g4 56.

♖g1+ ♗h3 57. ♜g3+ ♗h2 58. ♜×f3 h4 59.
 ♜f4 h3 60. ♜g4 ♘e2 61. ♜g7 ♘f3 62. ♗d6
 ♘g2 63. f4 ♗g1 64. ♜h7 h2 65. f5 ♘e4 66.
 ♜×h2 ♗×h2 67. f6 ♘g6 68. ♗e6 ♗g3 69. f7
 ♘×f7+ 70. ♗×f7 ♗f4



Black has wriggled well but this K+P ending is won for White

71. ♗e6 ♗e4 72. ♗d6 ♗d3 73. ♗×d5 ♗×c3
 74. ♗c5 ♗b3 75. d5 1-0